



*Spatializing the Métis
Historical Database using
Google Maps API*

*Jon Corbett, James Love, Mike Evans
and the BC Métis Mapping Initiative Project
UBC Okanagan*





Participation...

“Participation has become virtually mandatory in development (including research) projects, programmes and policies.”

(Cornwall *et al.*, 2001 p. 1).



Participation...

- Yet there are major challenges to realizing this participation - especially in dispersed communities
- The Métis in British Columbia are an excellent example of a dispersed community...



Fig. 66. Métis camp and hunters. ROM946.15.70; CRIV-69.

COURTESY ROYAL ONTARIO MUSEUM,



Métis Nation of B.C.

“The patterns of Métis occupancy were directly related to trade economics and infrastructure of the fur geography - those of rivers and mountains.”

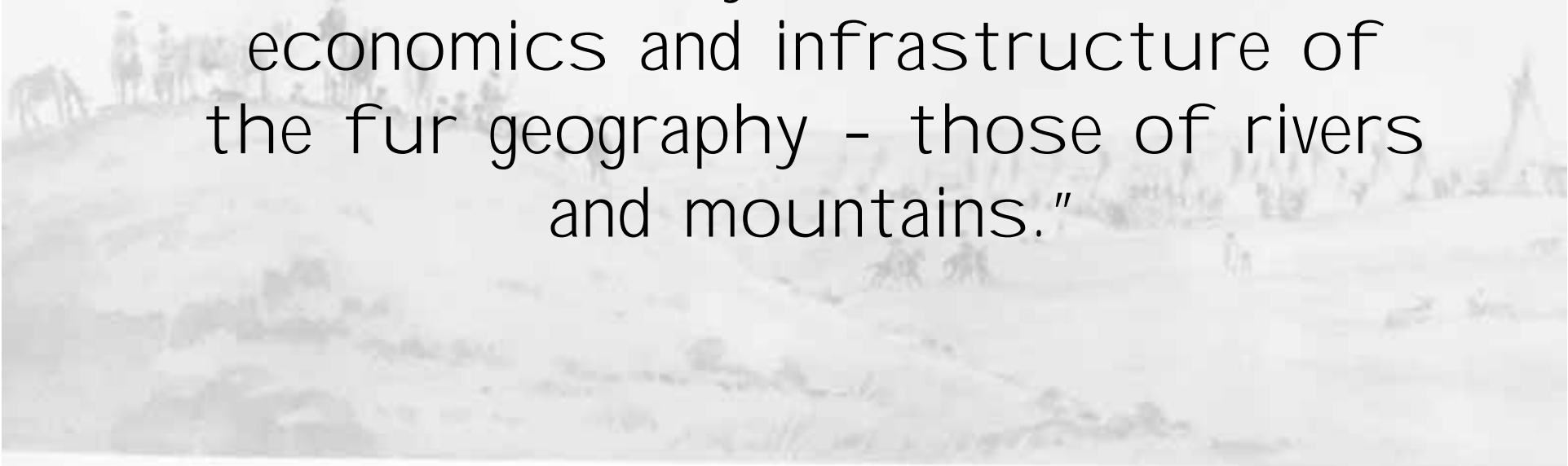
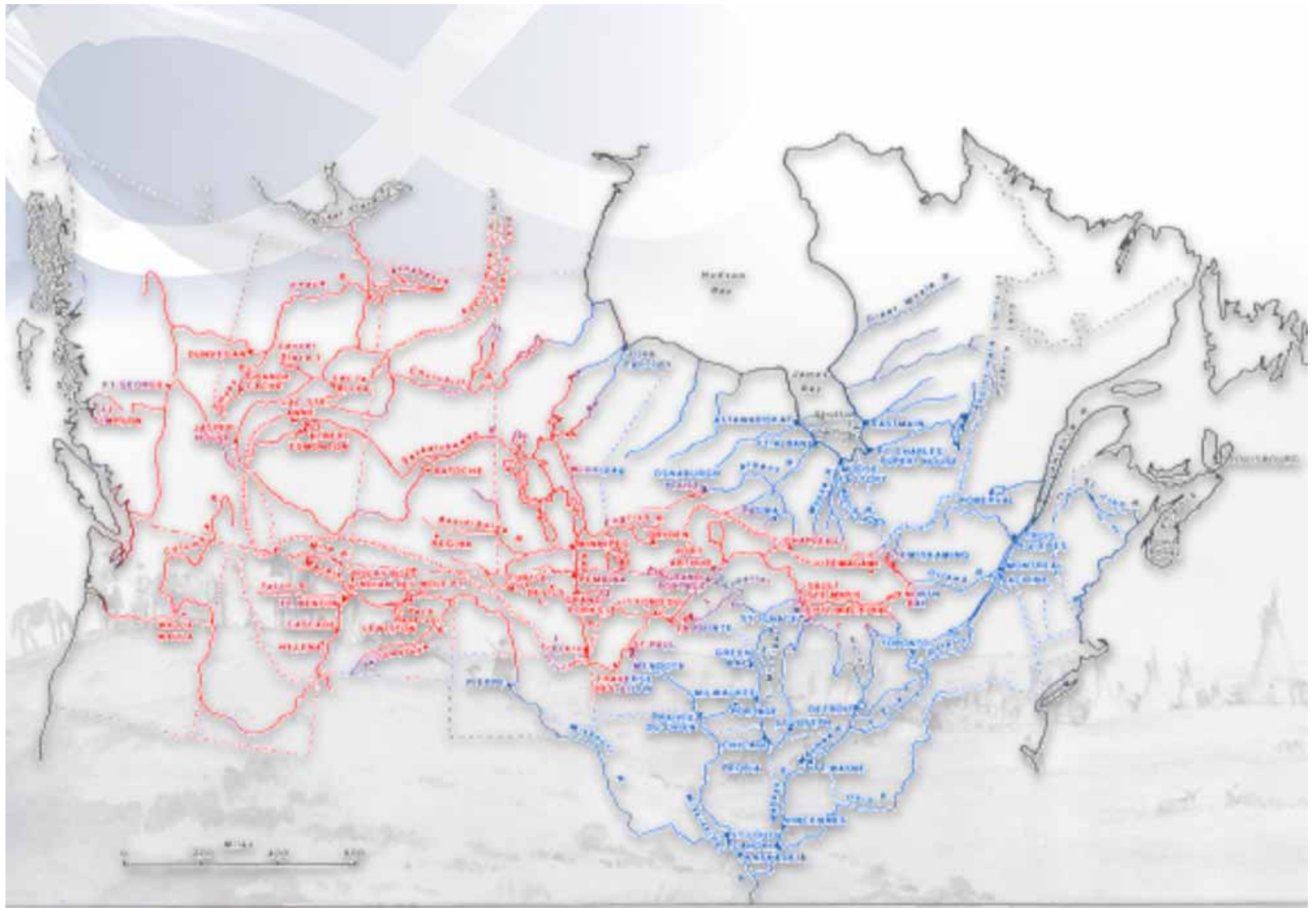


Fig. 66. Métis camp and hunters. ROM946.15.70; enIV-69.

COURTESY ROYAL ONTARIO MUSEUM,



Proto-Metis (Pre 1795)

Fig. **Metis (1795 on)** hunters. ROM946.15.70; crIV-69.

COURTESY ROYAL ONTARIO MUSEUM,





Research objectives

- To understand the historic patterns of Métis settlement and occupancy in BC
- To support Métis people and communities in understanding and documenting the past and present
- To pro-actively engage Métis people and communities in the processes of historical research



Project
aim...

“Develop the capacity to create and share historic and present-day Métis BC community information using Google Maps”



Project objectives...

- Search and access information from pre-existing non-spatial web-based databases
- Locate and display this information through a map interface
- Geo-locate and upload community members' materials including digital video and images

Cadotte Paul dit Etset'a ou Etco'tera, fils de Chumpe
et d'Ultradie
b. et m. 25-10-66, 35 a. Christine B. Eschier / Bédier
à ce jour, 30 ans
Bédier

Sophie b. 7-10-60, 2 a.
Sébastien b. 7-10-60, 8 m.

Caien ou Cayen

Madeline b. 8-4-64, 60 a. fille de Xpange et mekong

Mari m. Jos. Fournier (Etcho'i)

f. Julie

Madeline, sœur de Caien, fem. de Bapt. Lacroche

Et. m. 19...

Calion Elzeir m. Gaucher Olive
Delhomme III R³

Grande Prairie Adolphe b. 19-5-94, 14 m.

Grand Bâtard

Cambell ou Campbell Louis, dit Cardinal.

Louis

Marquente
+ 18-10-86, 50 a.

Marquente m. 74 Henri Mac Corister

Louis m. 6-8-77 Adelaide Suway, fille de

Joseph et Rose Gaudin

Permette m. 10 Blanche Whitebear

HAPPY CHRISTMAS

HOLY CHILDHOOD

HAPPY CHRISTMAS

HOLY CHILDHOOD

CANADA



Search and access information from pre- existing databases



KnowledgeTree™

Document Management Made Simple



BC Metis Mapping Research Project

Sponsored by the
Metis Nation of British Columbia

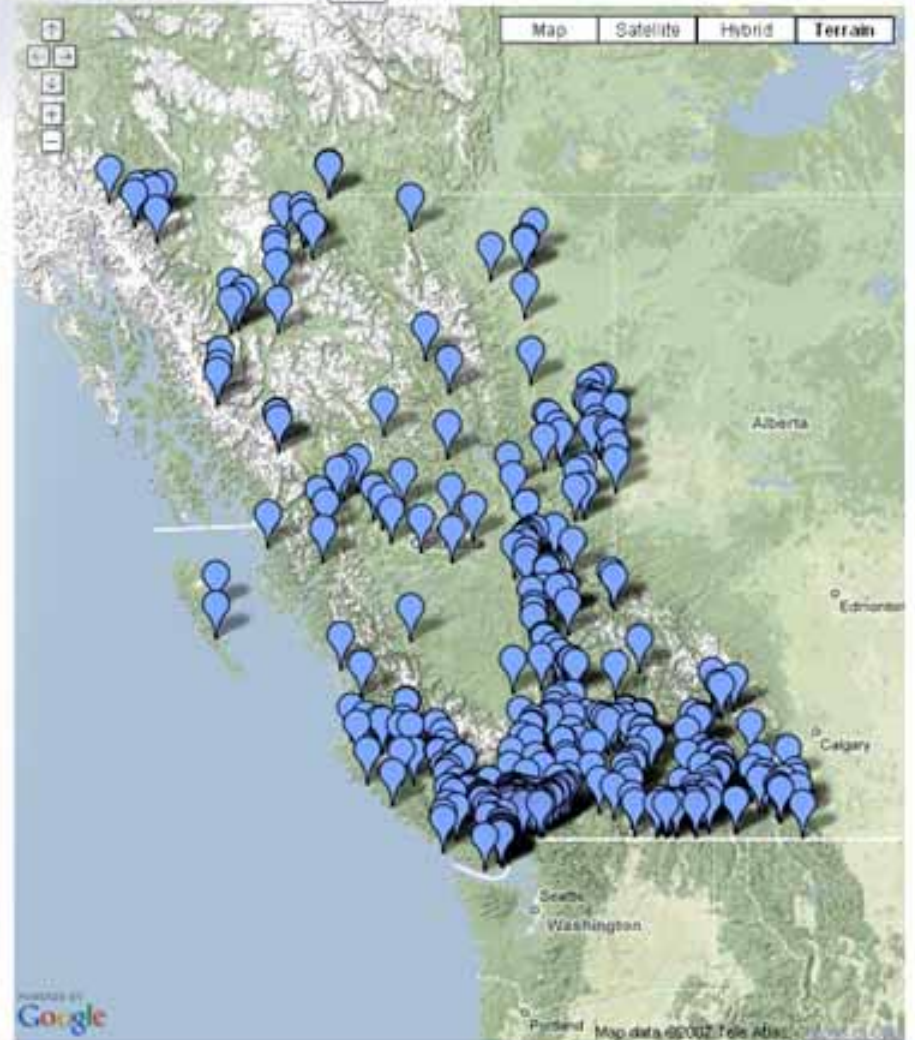


BC Metis GeoCoded Documents

Coordinates: 61.814664 -136.098633

Kamloops, BC

Go!



Powered by
Google

Portland Map data ©2002 Tele Atlas



BC Metis GeoCoded Documents

Coordinates: 61.814664-113.098633

Kamloops, BC

Go!



Locate and display
information through a map
interface



Google

BC Metis Mapping Research Project

Sponsored by the
Metis Nation of British Columbia



[Public Resources](#)
[Metis Nation of BC](#)
[UBC Okanagan](#)

[UBC Research](#)
[Historical DB](#)
[Document Indexing](#)
[Harvester Survey](#)

Harvester: ZR1 - Harvest Area 1

Coordinates: 51.44716,-118.707275 | Kamloops, BC

Go!





Public Resources
Government of BC
Metis Nation

BC Research
Historical DB
Search (beta)

Harvester: ZR1 - Harvest Area 1

Coordinates: 51.44716,-118.707275

Kamloops, BC

Go!

Map Satellite Hybrid Terrain

Geo-locate and upload
community members'
materials

Elk River Watershed

Big Game - Elk - Rocky Mountain
Big Game - Deer - Whitetail

Lethbridge



Document Frequency Key

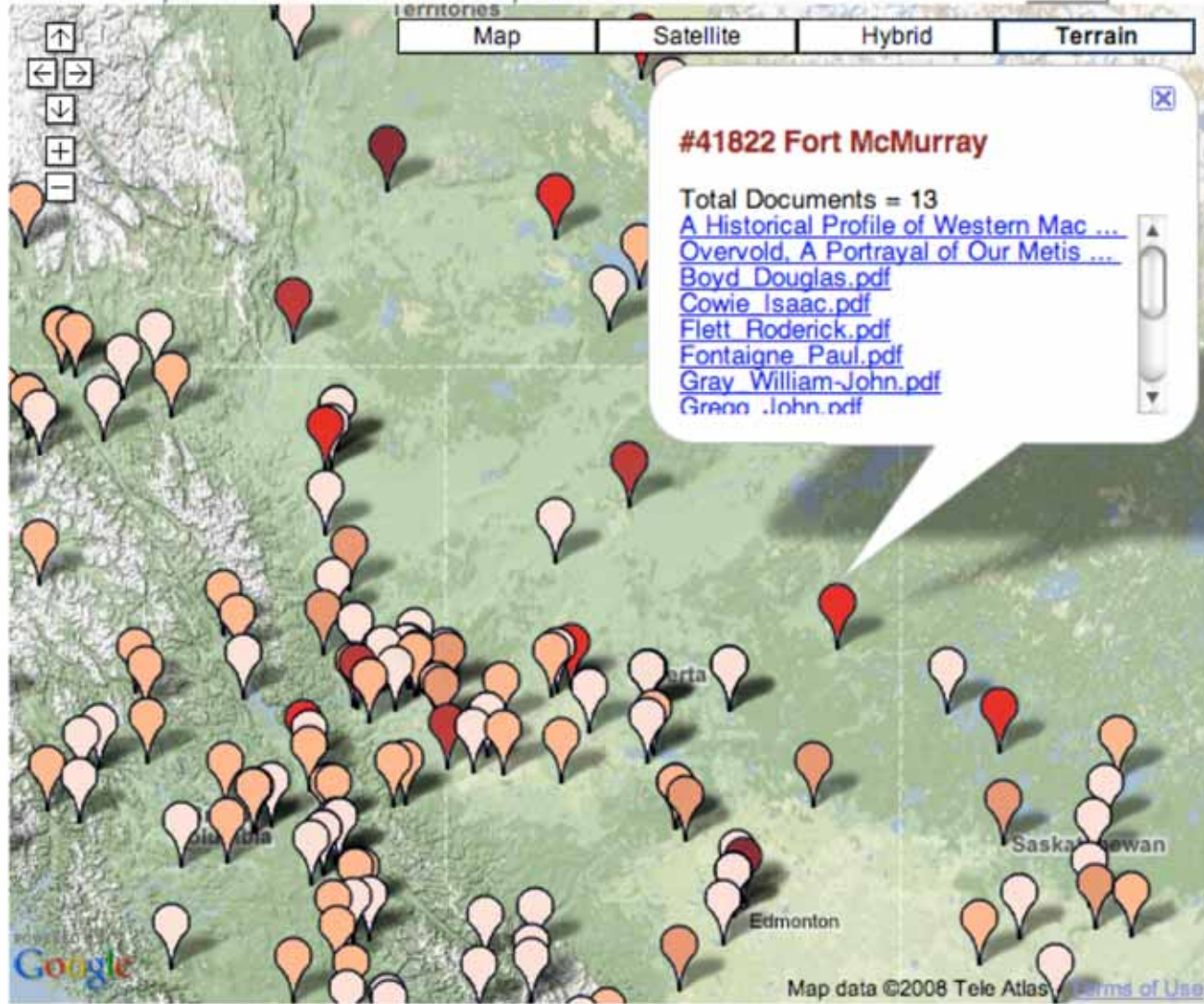
1 2 5 10 20 30+

Total Documents with Geocoded Place References: 1382

Date Range - From [---] To: [---] Submit

Leave ranges blank to show all places with documents.

Coordinates: [61.015725,-106.831055] [Kamloops, BC] Go!



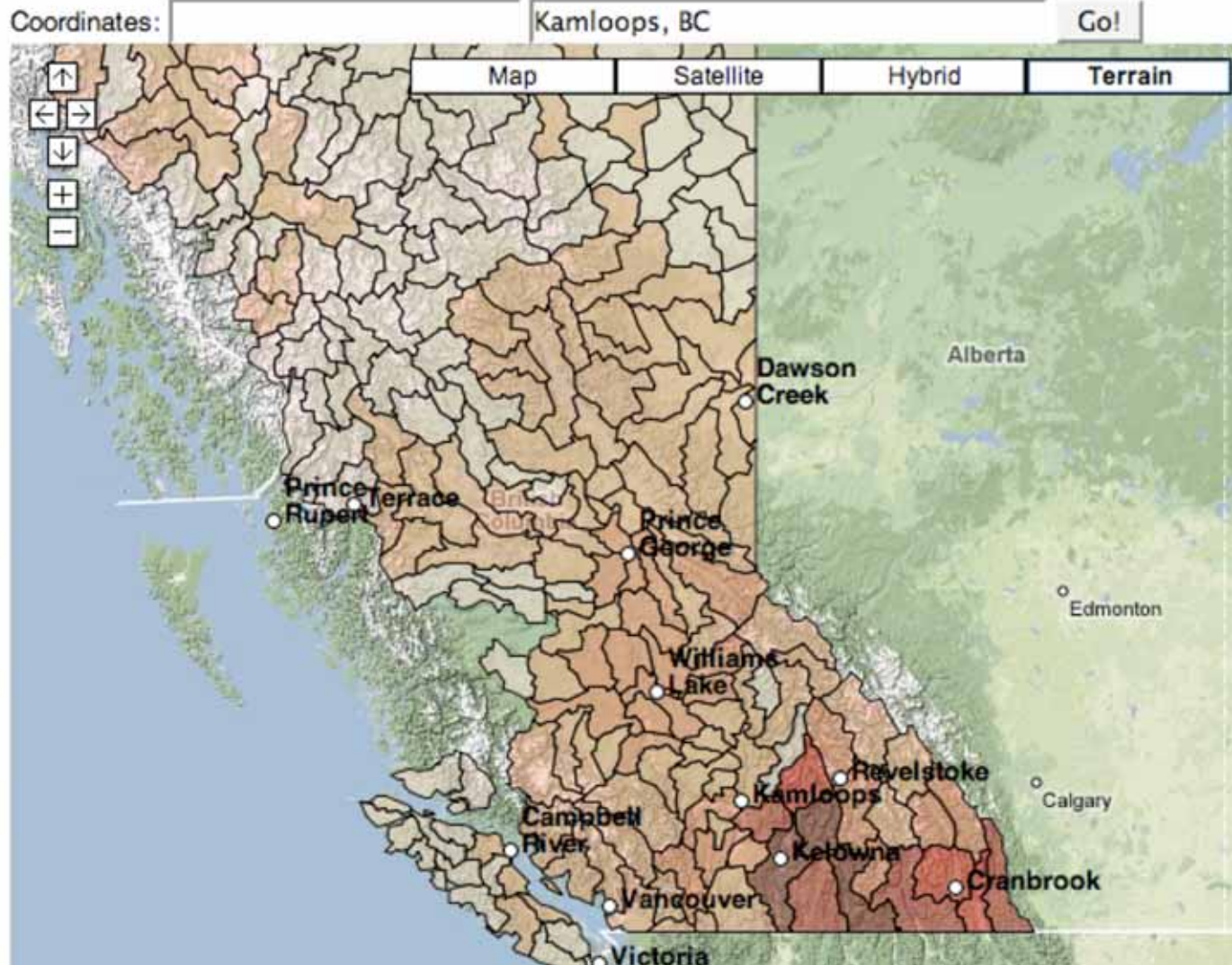
Harvester Area Frequency by Watershed

Harvest Areas per Watershed



[MC1](#) | [MC2](#) | [ME1](#) | [ME2](#) | [ME3](#) | [ME4](#) | [PH1](#) | [PH2](#) | [PH3](#) | [PH4](#) | [ZR1](#) | [ZR2](#) | [ZR3](#) | [ZR4](#) | [ZR5](#) | [ZR6](#) | [ZR7](#) | [ZR8](#) | [ZR9](#) | ALL

[Display Map Adjusted by Frequency of Use](#)



Harvester Area Frequency by Watershed

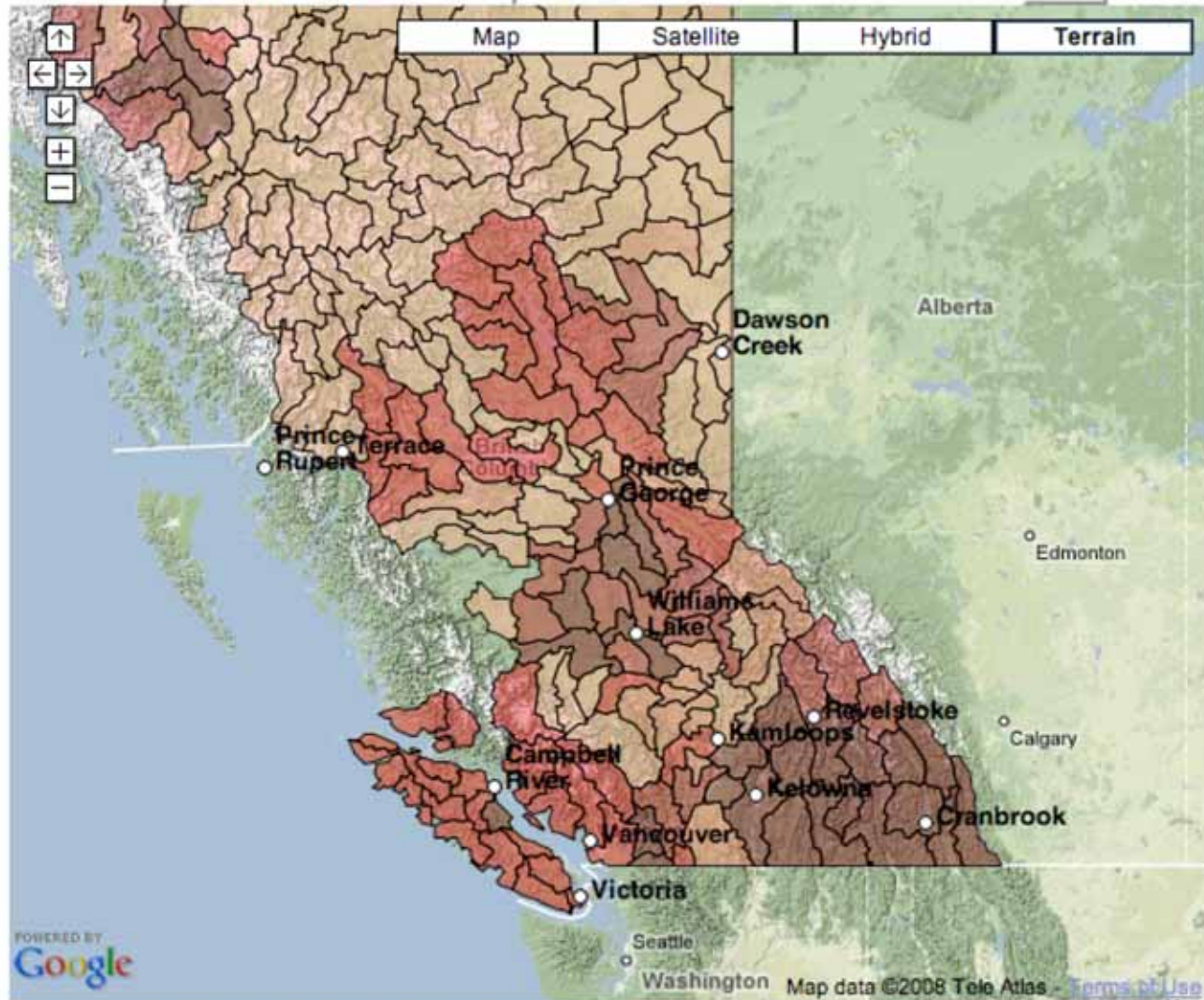
Harvest Area (Adjusted for Frequency of Use) per Watershed

[<=1](#) [>1](#) [>5](#) [>10](#) [>15](#) [>20](#)

[MC1](#) | [MC2](#) | [ME1](#) | [ME2](#) | [ME3](#) | [ME4](#) | [PH1](#) | [PH2](#) | [PH3](#) | [PH4](#) | [ZR1](#) | [ZR2](#) | [ZR3](#) | [ZR4](#) | [ZR5](#) | [ZR6](#) | [ZR7](#) | [ZR8](#) | [ZR9](#) | [ALL](#)

Display Map Adjusted by Frequency of Use

Coordinates:



Harvester Area Frequency by Watershed

Harvest Areas per Watershed



[MC1](#) | [MC2](#) | [ME1](#) | [ME2](#) | [ME3](#) | [ME4](#) | [PH1](#) | [PH2](#) | [PH3](#) | [PH4](#) | [ZR1](#) | [ZR2](#) | [ZR3](#) | [ZR4](#) | [ZR5](#) | [ZR6](#) | [ZR7](#) | [ZR8](#) | [ZR9](#) | ALL

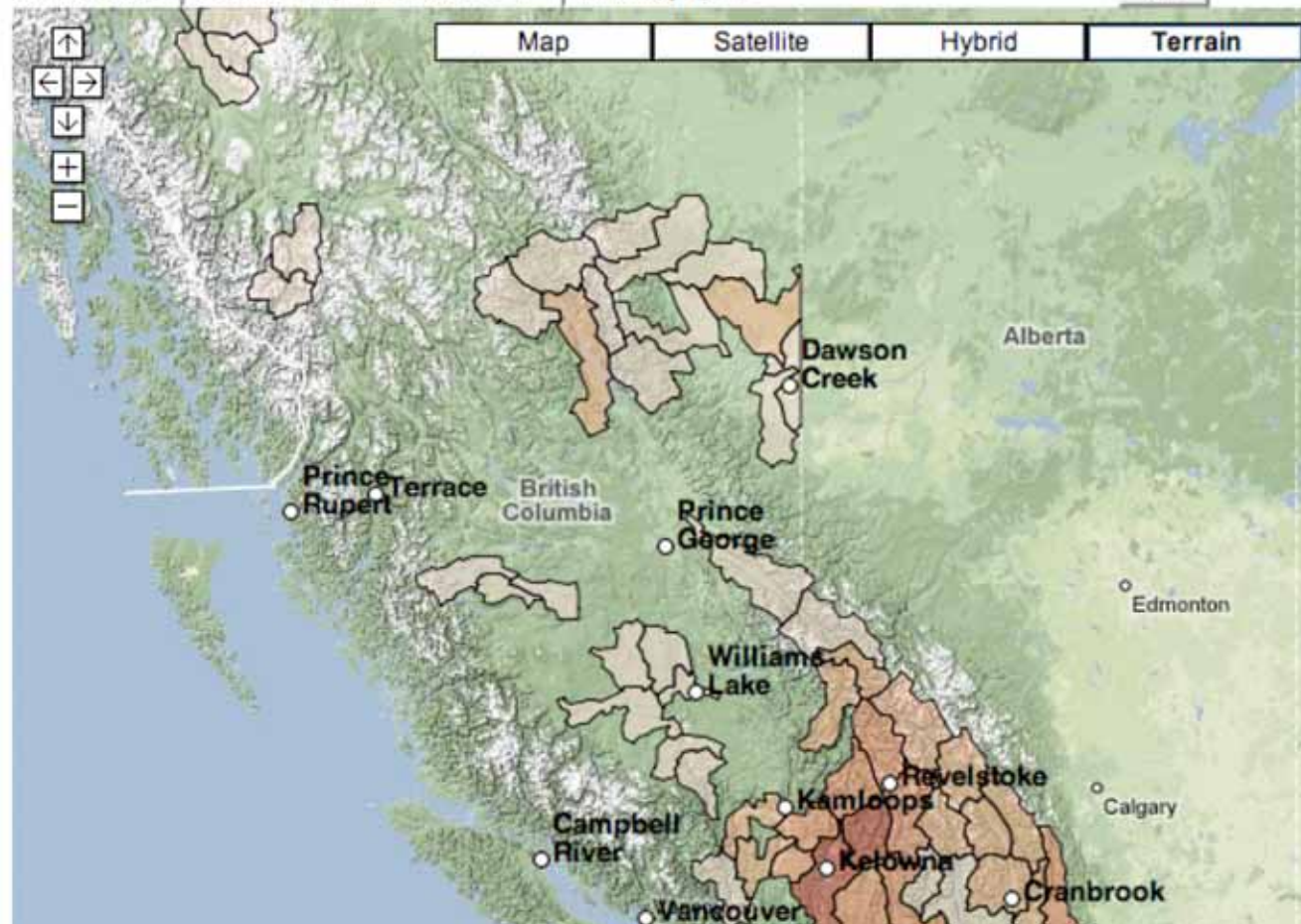
Display Map Adjusted by Frequency of Use

Family Relationships

[ME3](#) - Parent |

[ZR9](#) - Grandparent | Family Map

Coordinates:



[15 Areas](#)

Area #:

From: To:

- Instructions:**
1. Select the harvest area number, the date range, and the types of species to be recorded
 2. Click on the map to generate a marker. Only one marker is needed in some cases, as in lakes for fishing. For harvest areas, click around the harvest area.
 3. If the harvest area polygon (in pink) is acceptable, press the done button.
 4. The harvest area and related information is now stored.
- NOTE:** In the upper left corner of the map are zoom and pan controls. In the upper right are map view controls.

Big Game

Bison None

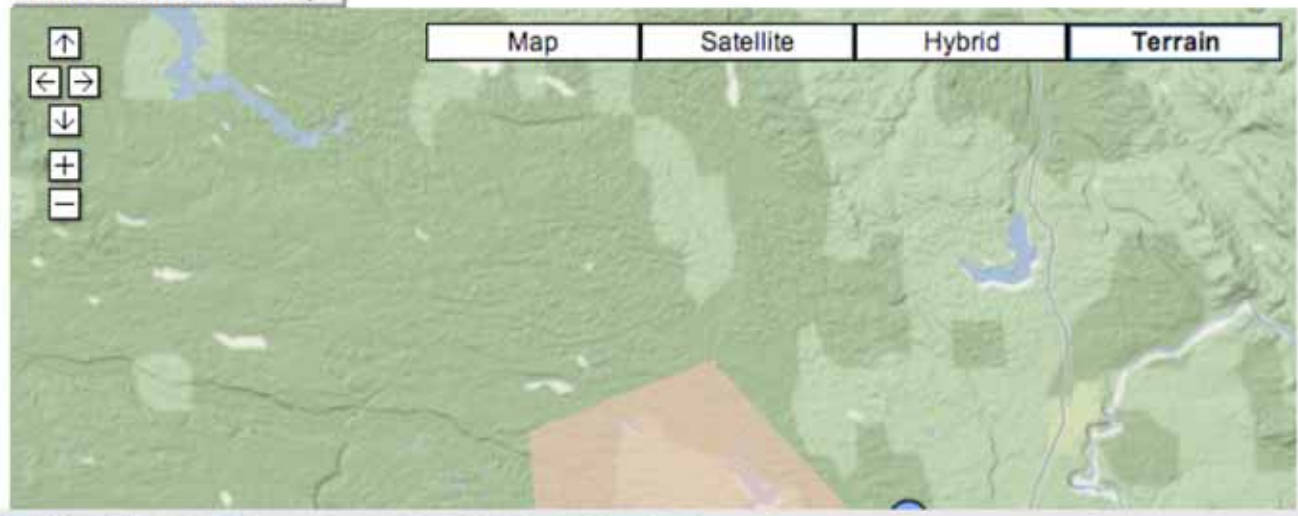
Bobcat None

Caribou None
 Barren Ground
 Mountain
 Woodland

Cougar None

Deer Columbia Blacktail
 Fallow
 Mule
 None
 Sitka Blacktail

Coordinates:

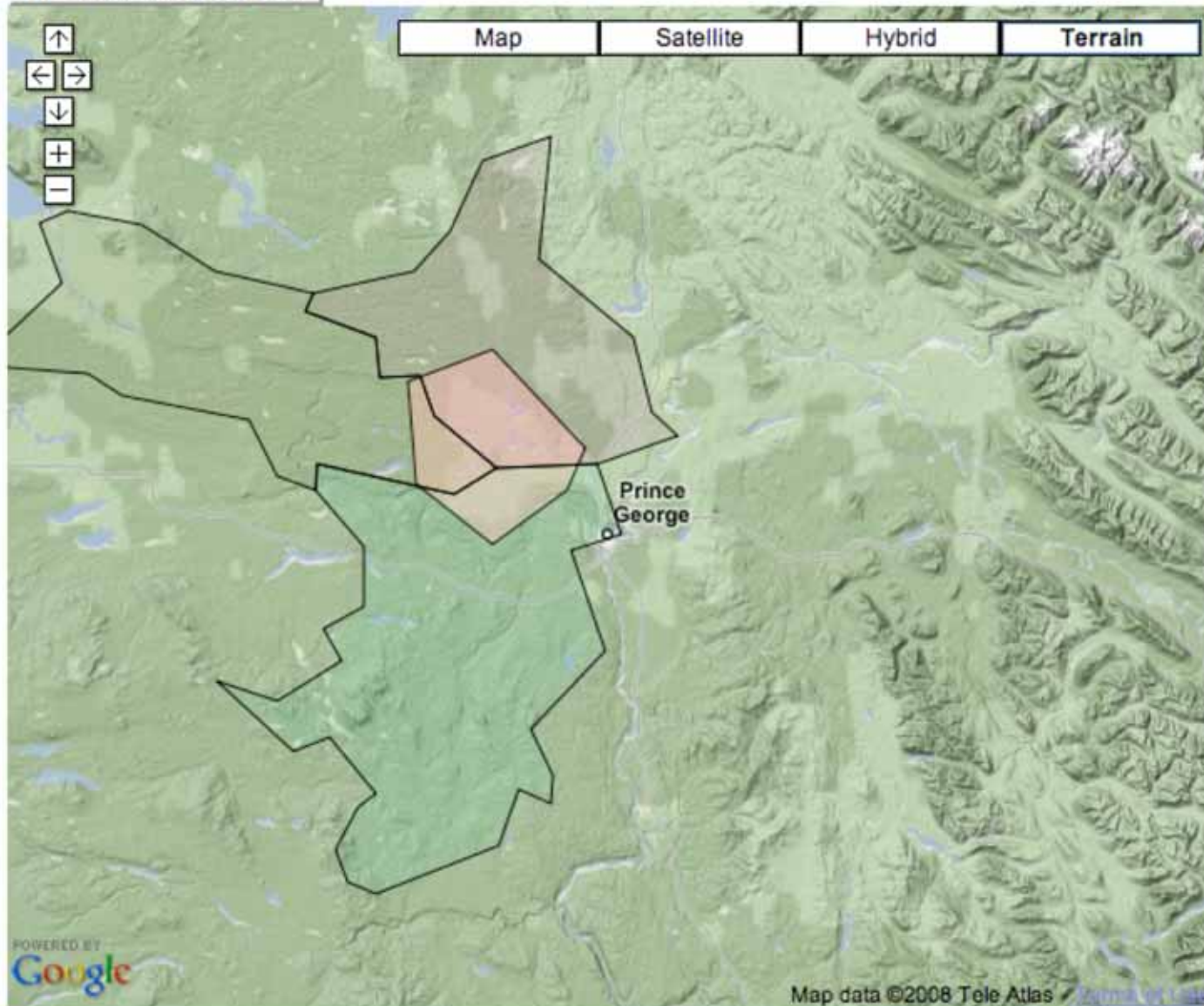


Done Area

New Area

Clear

Coordinates:



Harvester Area Frequency by Watershed

Harvest Areas per Watershed



[MC1](#) | [MC2](#) | [ME1](#) | [ME2](#) | [ME3](#) | [ME4](#) | [PH1](#) | [PH2](#) | [PH3](#) | [PH4](#) | [ZR1](#) | [ZR2](#) | [ZR3](#) | [ZR4](#) | [ZR5](#) | [ZR6](#) | [ZR7](#) | [ZR8](#) | [ZR9](#) | [ALL](#)

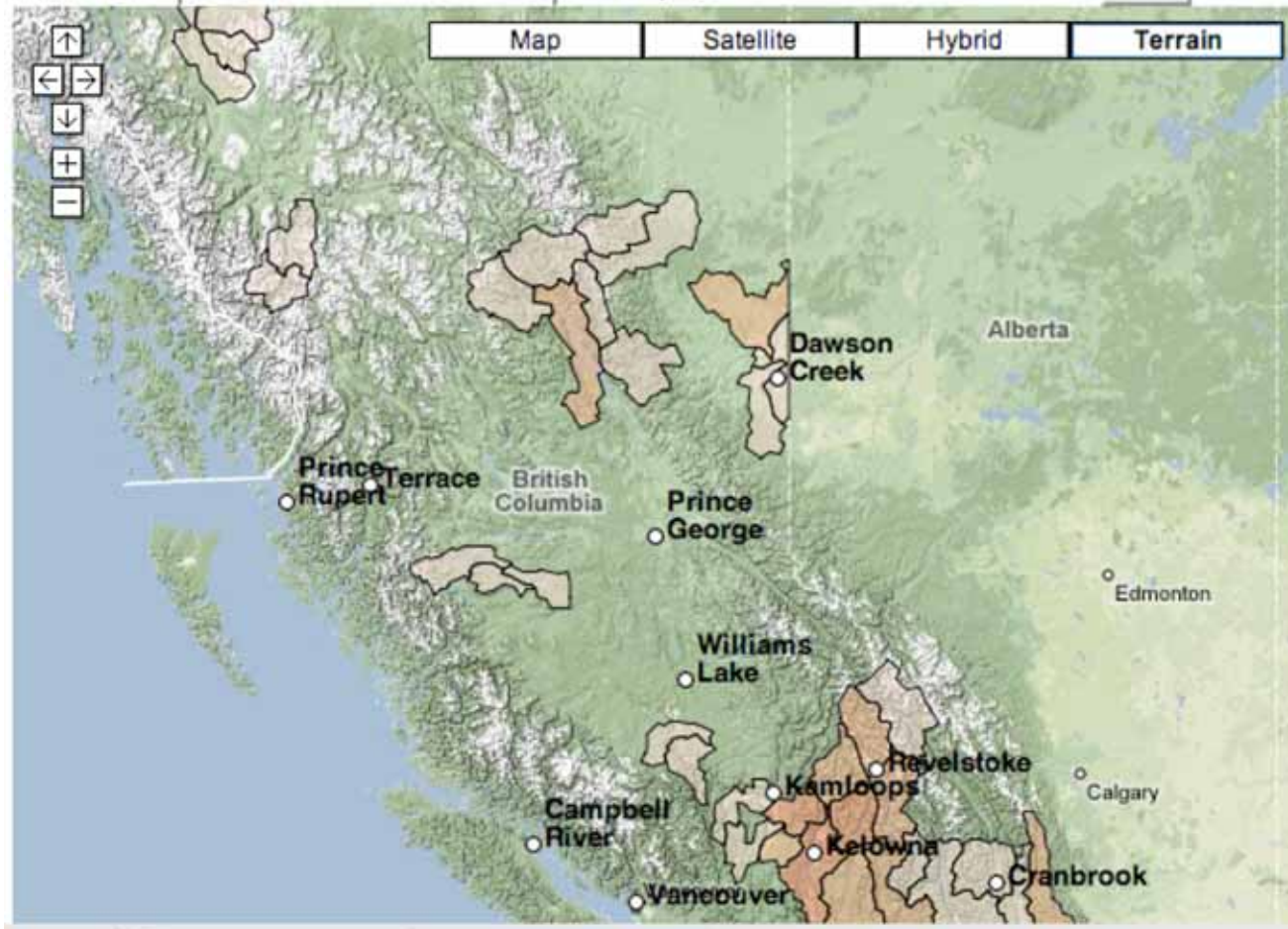
Display Map Adjusted by Frequency of Use

Family Relationships

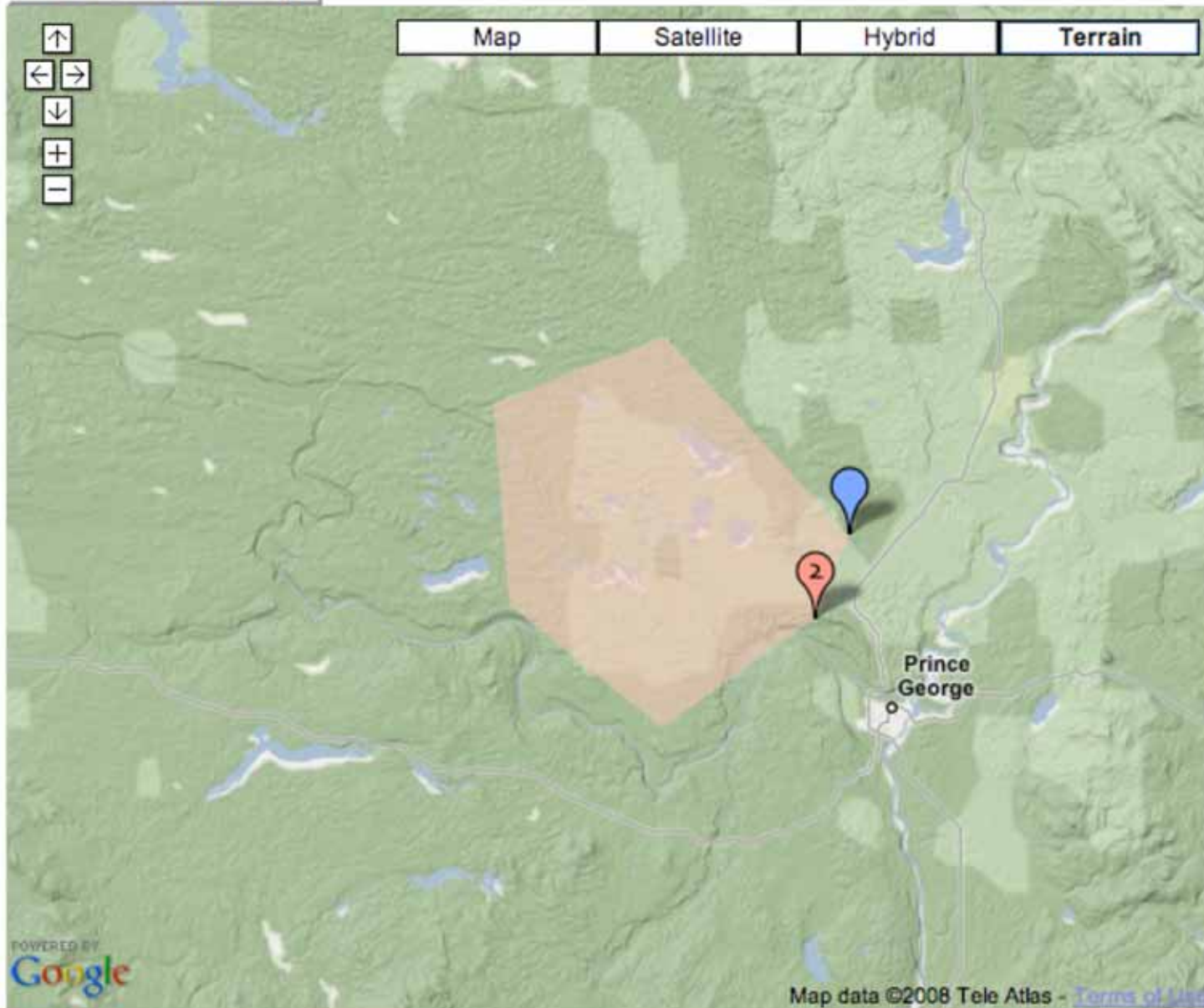
[ME3](#) - Parent |


[ZR9](#) - Grandparent | [Family Map](#)

Coordinates:



Coordinates:





Project process & product...

- Still a work in process
- Hope to have an operational site by the end of March
- Continue to improve the implementation and deployment of the concept...



Thank you!

*Jon Corbett, James Love, Mike Evans
and the BC Métis Mapping Initiative Project
UBC Okanagan*